

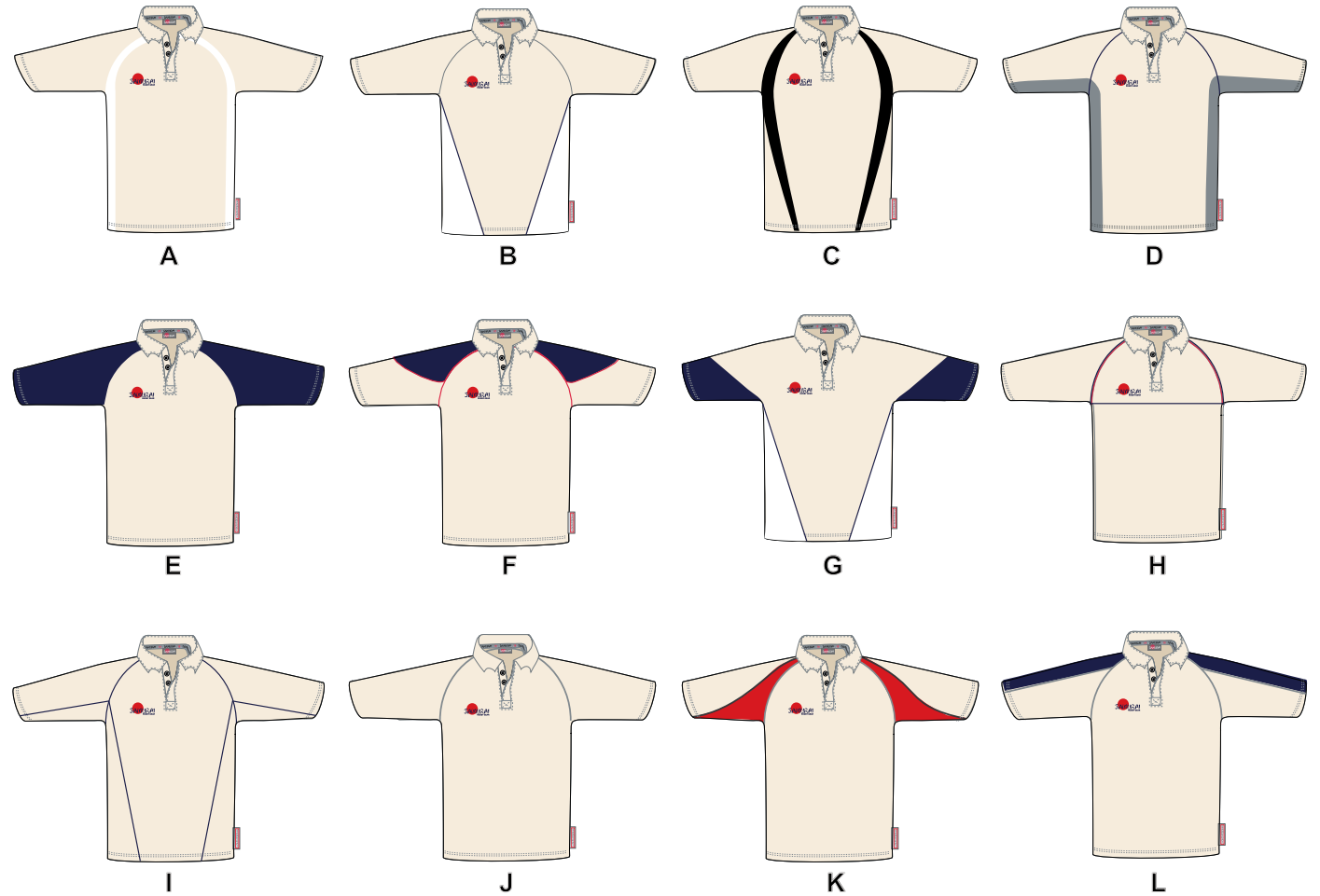




## Cricket Apparel

Modern Cricket shirts available in 12 styles but unlimited designs by the addition of coloured panels and/or piping.

Manufactured to exciting specifications from our Diamond Poly performance fabric and with 3/4 length sleeves as standard. These shirts with their individual style and accompanied by your club and sponsor's logo, will make a unique contribution to your efforts on the pitch.



### Test Cricket Shirts

Sizes: XS, S, M, L, XL, 2XL, 3XL, 4XL, 5XL

Diamond Poly:

Piping/Tape:

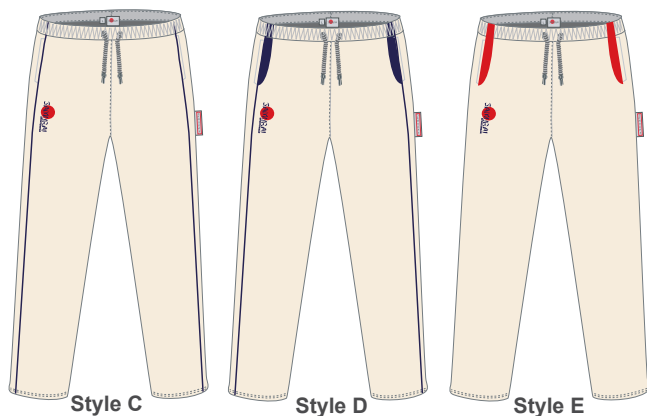
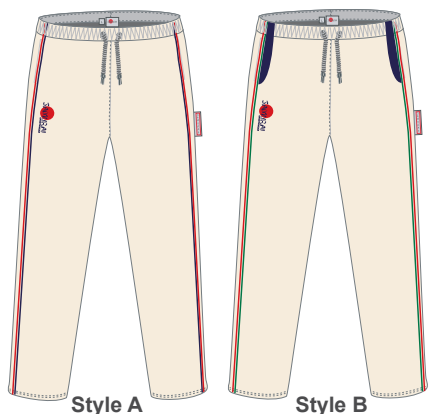
Description: 12 exciting test shirt options to choose from, you can decorate with embroidery, heatseal & screen prints. Minimum order 15.



Some Great New Designs For Playing Shirts



### Cricket Apparel



**Test Cricket Trousers** (made to order code) **11-000023**

**Sizes:** JNR, XSB, SB, MB, LB, XS, S, M, L, XL, 2XL, 3XL

**Diamond Poly:**

**Piping/Tape:**

**Description:** A fitting compliment to our test shirts. A classic cut in high performance fabric with the opportunity to add single or twin piping down the leg and colour coded pockets. An unfinished leg length hem. Made to order is a minimum of 15 pairs.



**NCB Trackpant** (made to order code) **11-000024**

**Sizes:** JNR, XSB, SB, MB, LB, XS, S, M, L, XL, 2XL, 3XL

**Microfibre:**

**Piping:**

**Description:** A classic trackpant in brushed Microfibre with 2 zipped pockets & tie cord waist. A 12" ankle zip allows fast removal as required.



**Surf T-Shirt** (made to order code) **0-6643502**

**Sizes:** SB, MB, LB, XS, S, M, L, XL, 2XL, 3XL, 4XL

**Jersey 220:**

**Piping/Tape:** N/A

**Description:** The most popular Tshirt for the last 4 years provides a fantastic warm-up / warm down top or to simply look great. Either in 6 stock colours or made to order to match your test shirts and trousers.



**Dri-Fit Long Sleeve** (made to order code) **0-664386**

**Sizes:** JNR, XSB, SB, MB, LB, XS, S, M, L, XL, 2XL, 3XL, 4XL, 5XL

**Diamond Poly:**

**Piping/Tape:** N/A

**Description:** Medium weight technical Diamond Poly breathable fabric long sleeve shirt with distinct Samurai branding to right sleeve. Standard grey mesh lining. A great warm-up or leisure shirt. Also available as short sleeve. **Please note that the Samurai branding on left sleeve cannot be removed on bespoke orders (colour change possible).**





● **HOCKEY**

● **CRICKET**

We offer Hockey & Cricket in our teamwear brochure. We have a huge amount of experience in providing this type of clothing and associated products. Many of our Independent Schools have been using Samurai for Hockey, Netball and Cricket kit for years.

As the year progresses Samurai will be adding even more new garments. For the most up-to-date information please call our sales office on (09) 828 7430 or e-mail: [sales@samurai-sports.co.nz](mailto:sales@samurai-sports.co.nz)





# Ladies Playing Kit

Elite Top Style A



Elite Top Style B



Seville



Seville



Madrid Zaragoza Jerez Prado



Madrid Zaragoza Jerez Prado

## Elite Sports Top (Semi Fit) (made to order code) 10-711373

Sizes: 6, 8, 10, 12, 14, 16, 18, 20

Diamond Poly: [Color swatches]

Elastane: [Color swatches]

Piping/Tape: [Color swatches]

Description: A highly technical match shirt, made from a combination of our hollow fibre Underskinz 142 and Diamond Poly fabrics. These intuitive fabrics offer one of the best temperature control systems available and the modern fashion cut is designed to allow elite athletes to perform at their best. Velcro can be added to front and back for netball bibs.



## Capped Sleeve Polo (Semi Fit) (made to order code) 10-711374

Sizes: 6, 8, 10, 12, 14, 16, 18, 20

Diamond Poly: [Color swatches]

Jersey 220g [Color swatches]

Piping/Tape: [Color swatches]

Description: Available in plain, Jerez, Zaragoza, Prado and Madrid styles and can be made from either smooth feel jersey knit 220g or our new technical, breathable Diamond Poly fabric. Standard collar (as shown) or Vneck option. Velcro can be added to front and back for Netball bibs.



## Full Sleeve Polo (Semi Fit) (made to order code) 10-711375

Sizes: 6, 8, 10, 12, 14, 16, 18, 20

Diamond Poly: [Color swatches]

Jersey 220g [Color swatches]

Piping/Tape: [Color swatches]

Description: Available in plain, Jerez, Zaragoza, Prado and Madrid styles and can be made from either smooth feel jersey knit 220g or our new technical, breathable Diamond Poly fabric. Standard collar (as shown) or Vneck option. Velcro can be added to front and back for Netball bibs.

